

Permanent Service

Primary Power to Transformer

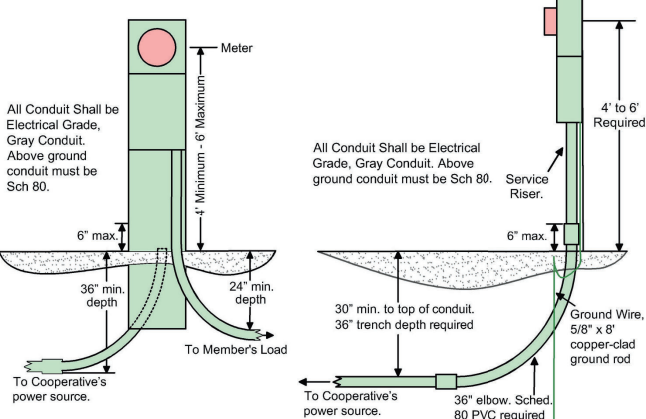
Underground for Construction Service

FECC Drawing 4.6-3

FECC Drawing 8.6-2

FECC Drawing 8.7-1

FECC Drawing 4.5-2



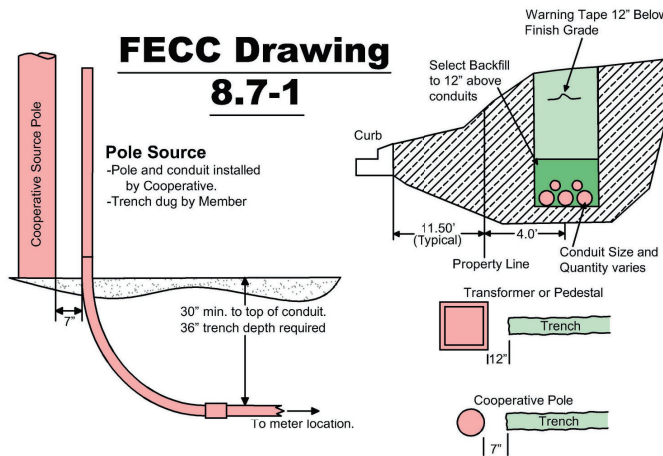
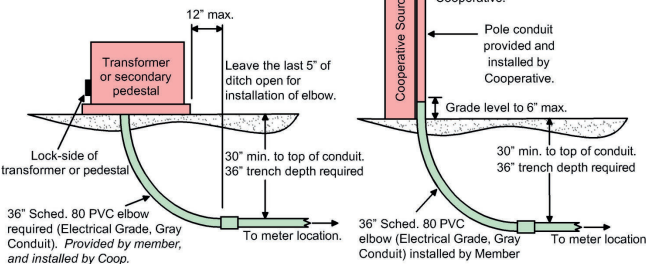
Service Rating	Conductor		Conduit	Ground Wire
	Copper	Aluminum		
100A	#2	1/0	2"	#6
200A	2/0	4/0	2"	#4
320A	350	500	3"	#2

Service conductor (75°+ cable) and conduit sizes

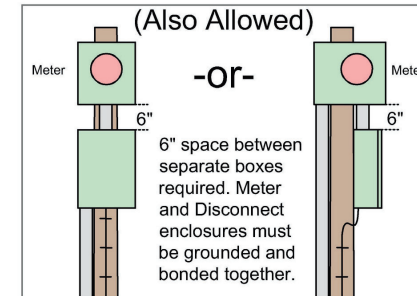
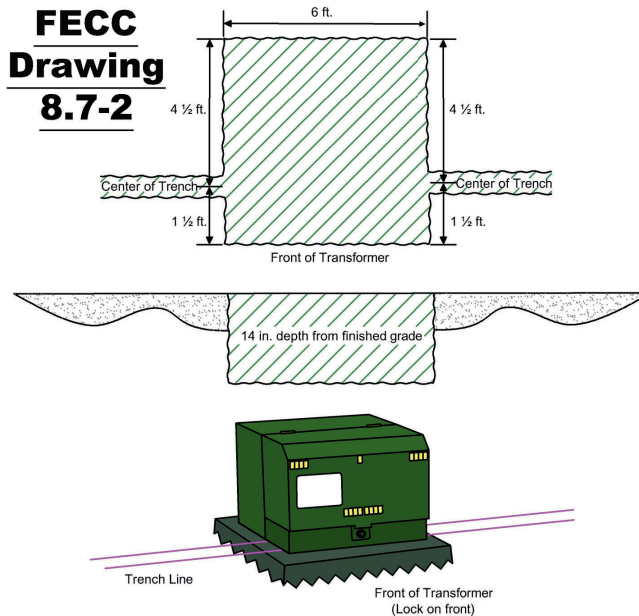
FECC Drawing 8.6-1

FECC Drawing 8.6-1

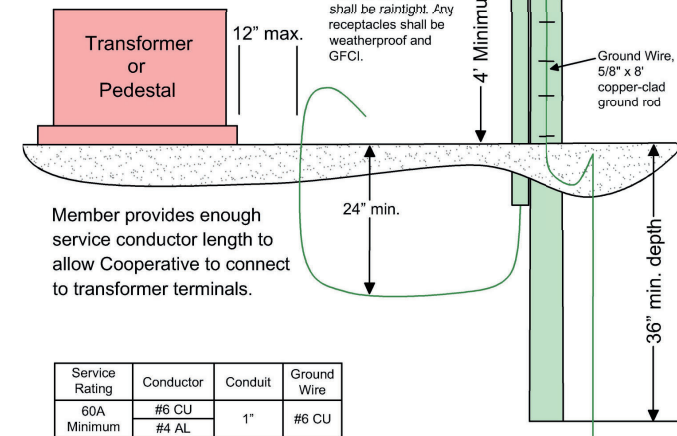
Transformer or Secondary Pedestal Source
Transformer or secondary pedestal installed by Cooperative.



FECC Drawing 8.7-2



All Conduit Shall be Electrical Grade, Gray Conduit. Above ground conduit must be Sch 80.



Member provides enough service conductor length to allow Cooperative to connect to transformer terminals.

Service Rating	Conductor	Conduit	Ground Wire
60A Minimum	#6 CU #4 AL	1"	#6 CU
100A	#2 CU 1/0 AL	1 1/2"	#6 CU
200A	2/0 CU 4/0 AL	2"	#4 CU

Service conductor (75°+ cable) and conduit sizes

Items in **Green** are provided by the member;
items in **Red** are provided by First Electric.

Disclaimer:

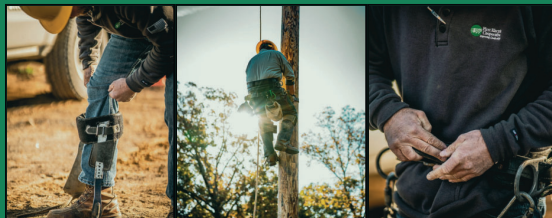
While this guide highlights the essentials, more detailed information can be found online. Scan the QR code to access First Electric's website.



Overhead for Construction Service



First Electric
Cooperative



WHAT IS A CO-OP? We're Powered by YOU!

First Electric is more than your local electric provider – we're a not-for-profit, member-owned cooperative built to serve, not profit.

We were founded when neighbors came together to bring electricity to rural areas that had been left without service by for-profit utility companies. That spirit of cooperation still drives us today.

Unlike investor-owned utilities, we don't send profits to shareholders. Instead, any money left over after operating expenses – called margins – is returned to you, our members, as capital credits.

Notes:

- Water and gas lines must be placed in a separate ditch from electric lines
- Conduit shall be 3' deep
 - Schedule 80 gray PVC above ground
 - Schedule 40 gray PVC below ground
- No more than three 90° elbows
- No back-to-back 90° elbows
- All conduit shall have a pull string installed

Visit our website by
scanning the QR code.



www.firstelectric.coop



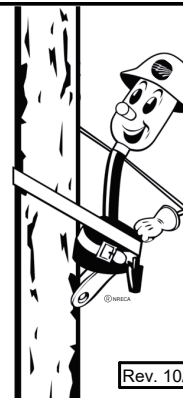
First Electric
Cooperative
800-489-7405

Scan to explore our
fiber services.



www.connect2first.net

CONNECT2First
833-411-2234



Rev. 10/2/2025

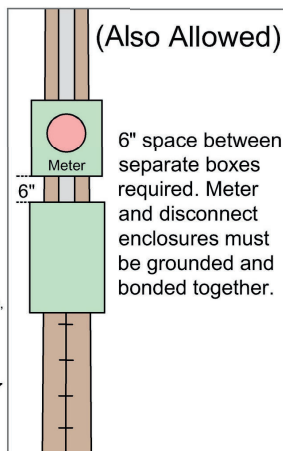
FECC Drawing 4.5-1

All equipment and
conduit connections
shall be raintight. Any
receptacles shall be
weatherproof and GFCI.

All Conduit Shall be Electrical
Grade, Gray Conduit. Above
ground conduit must be Sch 80.

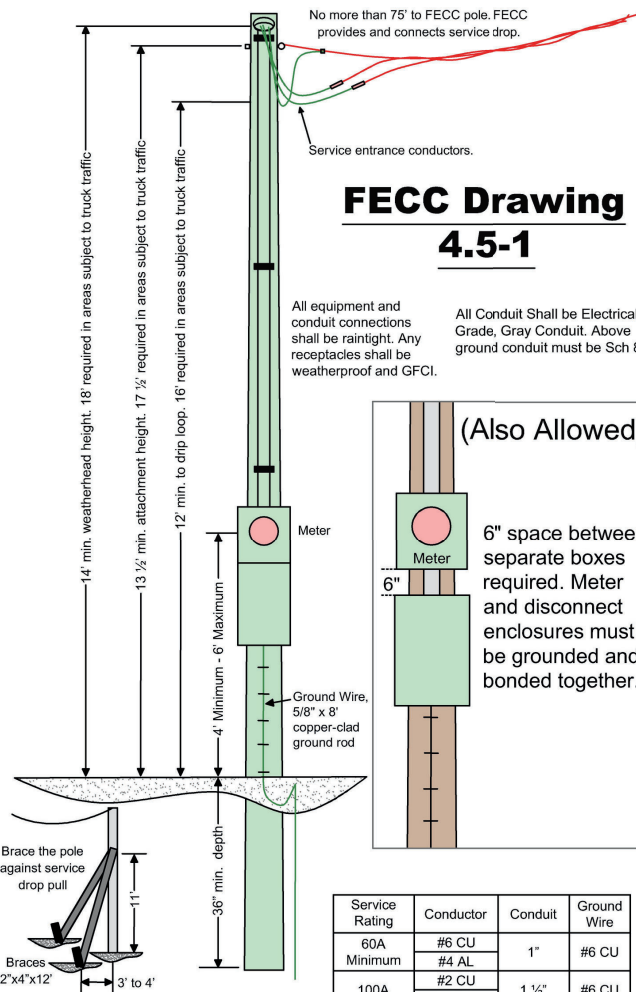
(Also Allowed)

6" space between
separate boxes
required. Meter
and disconnect
enclosures must
be grounded and
bonded together.



Service Rating	Conductor	Conduit	Ground Wire
60A Minimum	#6 CU	1"	#6 CU
	#4 AL		
100A	#2 CU	1 1/2"	#6 CU
	1/0 AL		
200A	2/0 CU	2"	#4 CU
	4/0 AL		

Service conductor (75'+ cable) and conduit sizes



Items in **Green** are provided by the member;
items in **Red** are provided by First Electric.

Residential Underground Service Guide

